



GAT MONTHLY MEMBERSHIP PROGRESS REPORT

Results as of: 2/28/2023

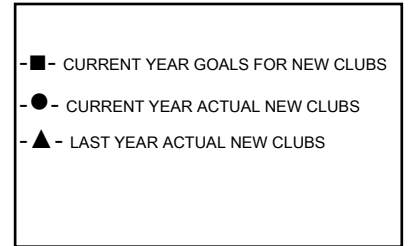
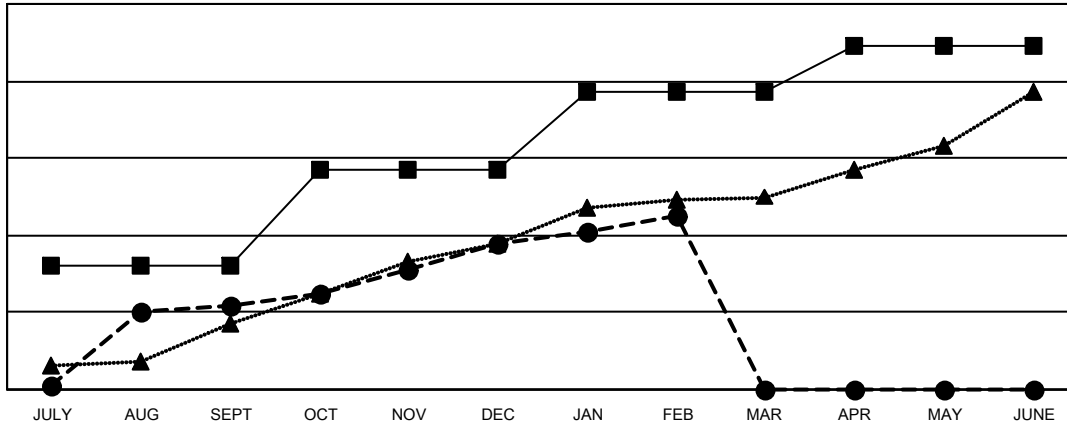
Multiple District 318

LOCATION: INDIA

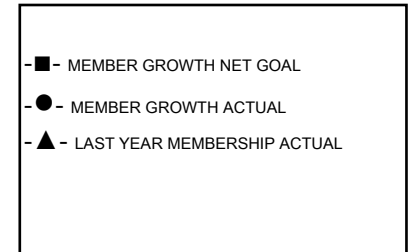
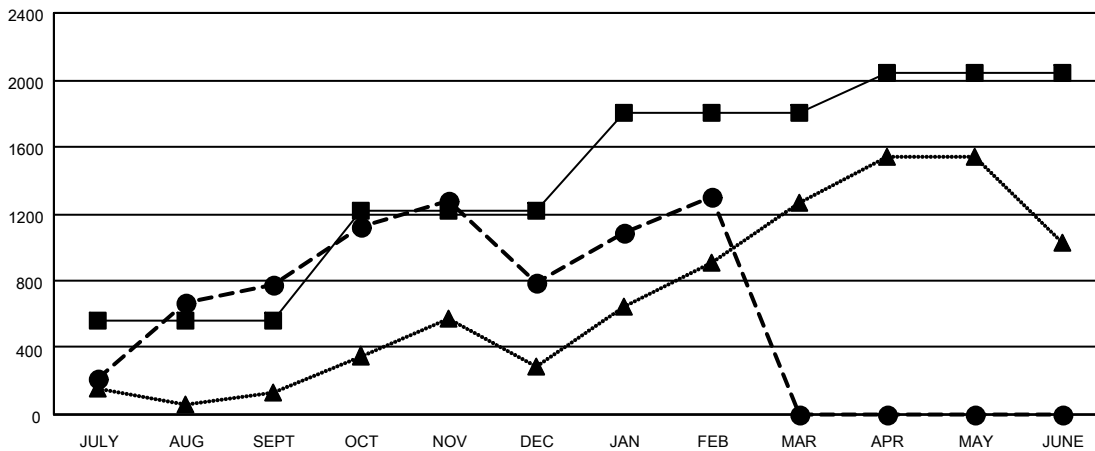
Clubs			
RESULTS FOR 2022-2023			
QUARTER	NEW CLUB GOAL	NEW CLUBS	DROPPED CLUBS
JULY/AUG/SEPT	32	22	3
OCT/NOV/DEC	25	16	22
JAN/FEB/MAR	20	7	5
APR/MAY/JUNE	12	0	0

Members			
RESULTS FOR 2022-2023			
QUARTER	MEMBER GROWTH NET GOAL	MEMBER GROWTH ACTUAL	DROPPED MEMBERS ACTUAL (including transfers)
JULY/AUG/SEPT	560	1,361	538
OCT/NOV/DEC	655	1,360	1,259
JAN/FEB/MAR	590	827	251
APR/MAY/JUNE	240	0	0

GOALS AND ACTUAL NEW CLUBS CUMULATIVE



GOALS AND ACTUAL MEMBERS CUMULATIVE



DROPPED CLUBS: 30	469 CLUBS OF 805 ADDED 1 OR MORE NEW MEMBERS	GENDER DISTRIBUTION	
		MALE 21,139 (80.27%)	FEMALE 5,195 (19.73%)
DROPPED MEMBERS		NON BINARY 1 (0.00%)	PREFER NOT TO ANSWER 1 (0.00%)
DECEASED 85	CLICK HERE FOR CUMULATIVE MEMBERSHIP DATA	TOTAL FAMILY UNIT MEMBERS 9,325	
CLUB CANCELLED 550		FAMILY MEMBERS PAYING HALF DUES 4,975	
OTHER 1,413			
TOTAL 2,048			